

Terra Project Alaska



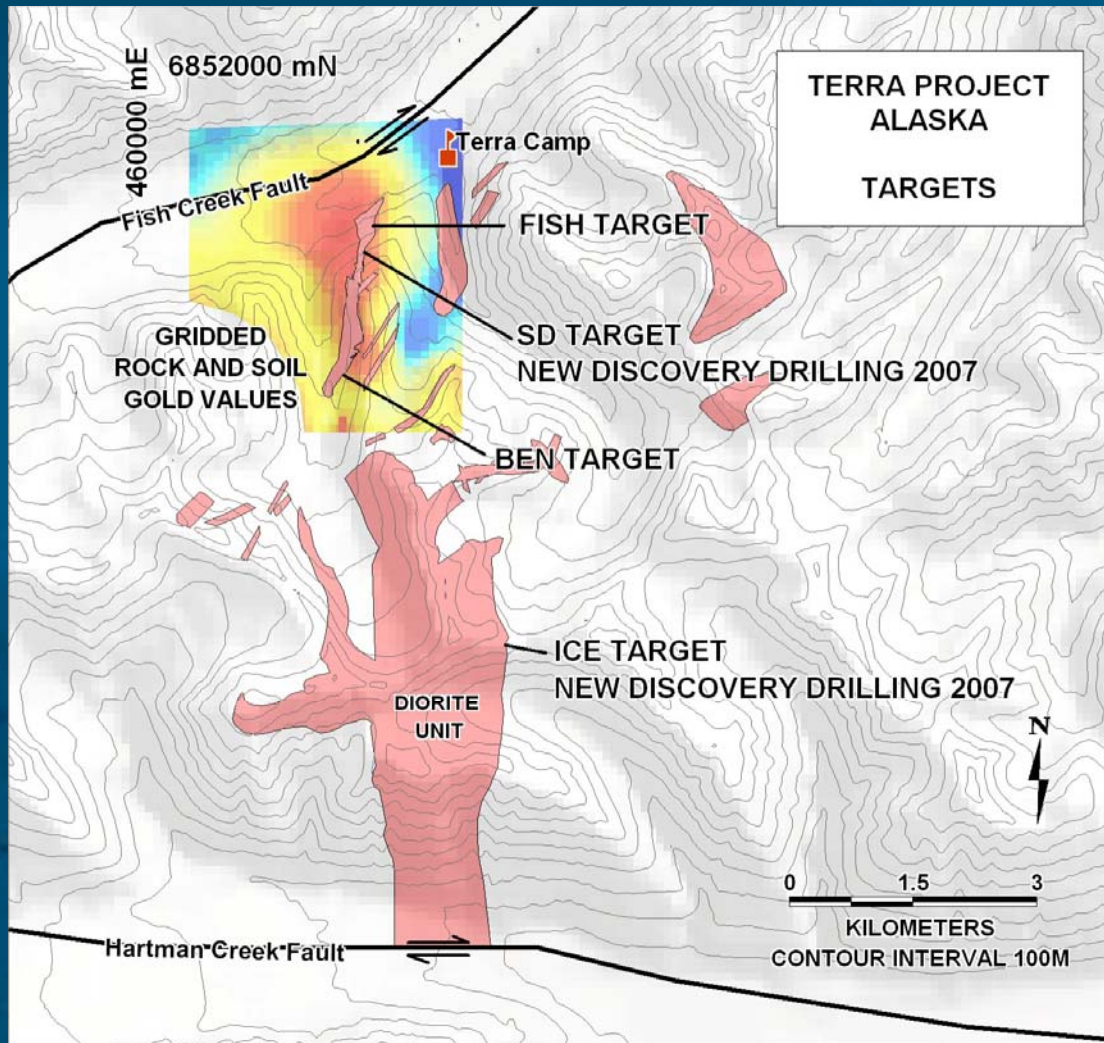
INTERNATIONAL
TOWER
-HILL-
MINES LTD



Terra Target Setting



INTERNATIONAL
TOWER
-HILL-
MINES LTD

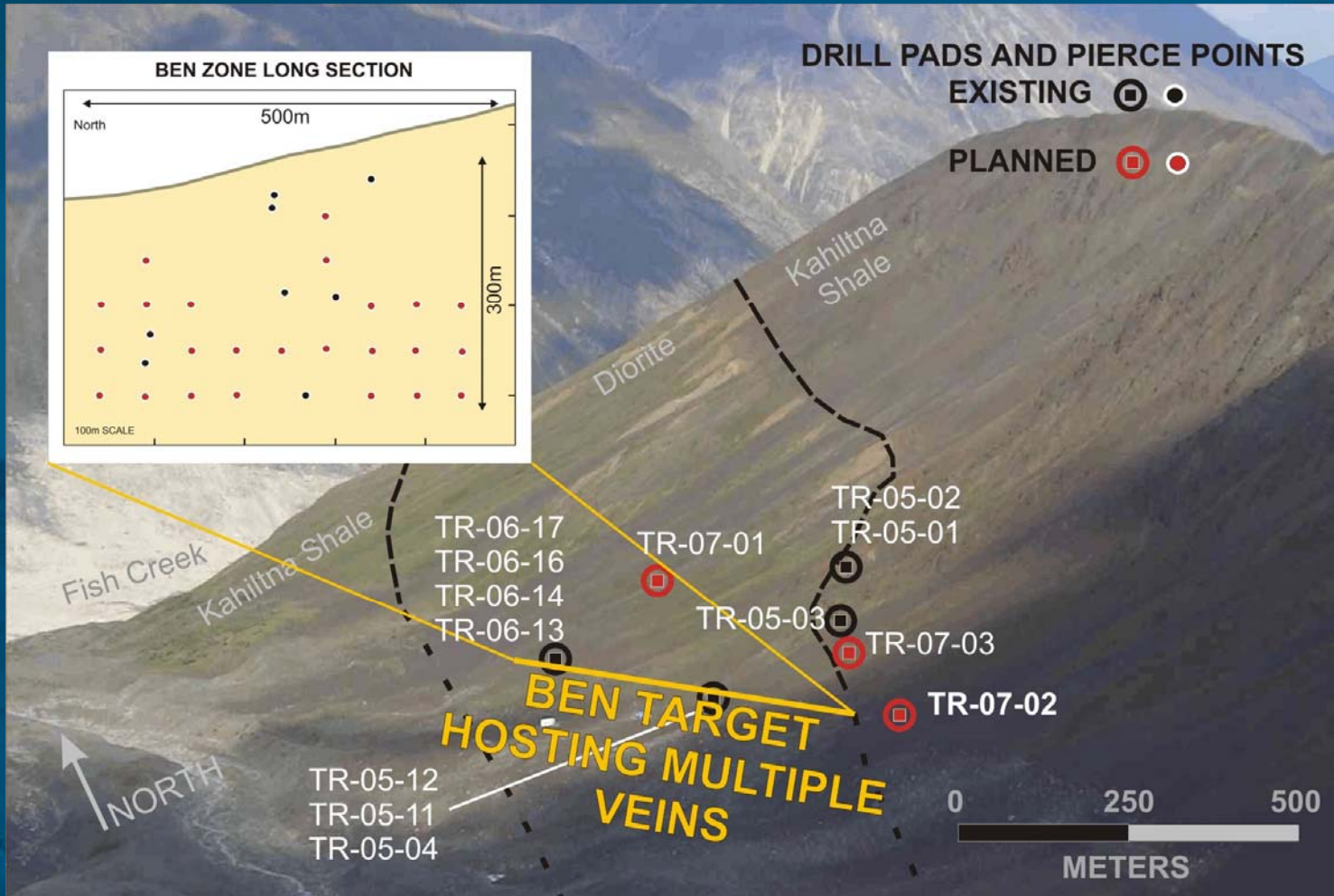


- Joint Venture with AngloGold in which ITM is earning a 60% interest.
- Terra project located ~200km west of Anchorage in the heart of the Cretaceous porphyry belt.
- To date ITM has defined four high-grade gold vein systems which generally average 20-25 g/t Au over widths of 1-4 meters.
- Gold recovery study indicates excellent gold recovery with gravity circuit and a low environmental impact

Ben Zone Long Section

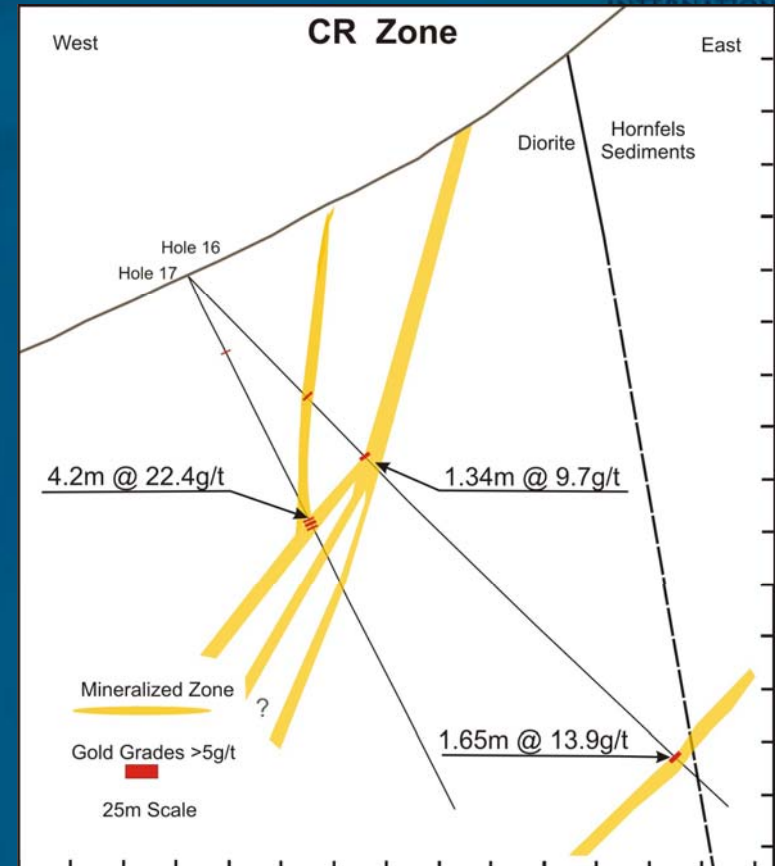
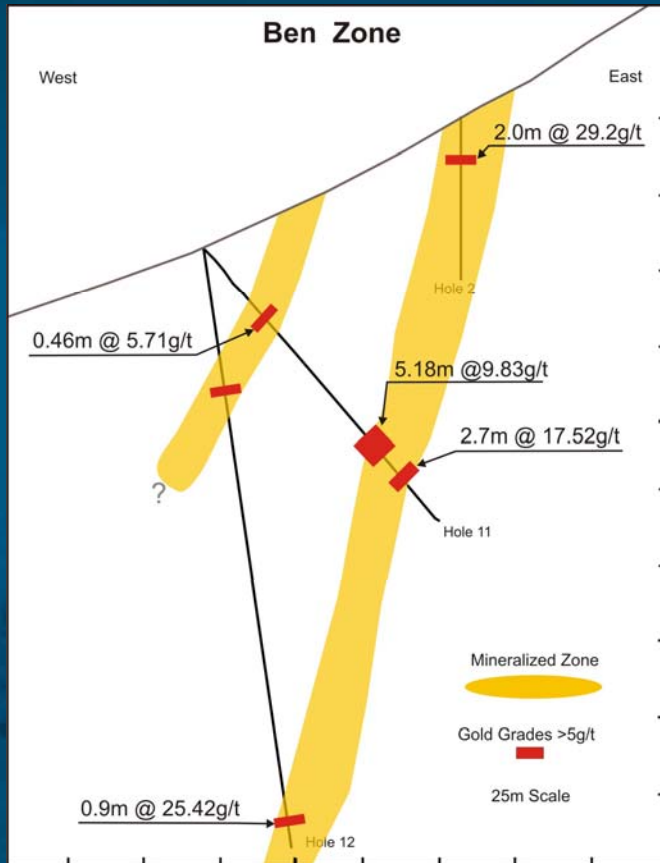


INTERNATIONAL
POWER
MILLS
LTD



Initial 2007 program evaluating ~500,000 tonne potential
2007 resource development program of 4000m in 20 holes

Ben Target Cross Sections



- The 15 holes completed to date returning 22 vein intersections above 7g/t over a minimum 1m width averaging 28g/t Au.
- Three other vein systems similar to the 'Ben' with significant high-grade surface and drill intercepts yet to be evaluated.

Terra Project Timeline



INTERNATIONAL
TOWER
-HILL-
MINES LTD

- *Initial drill discovery in 2005*
- *Expanded vein potential and assessment of the district potential in 2006*
- *Initial resource-definition drill program and joint venture vesting in 2007*
- *Initial high-grade resource estimate and preliminary economic scoping study of Ben's Zone in early 2008 (one of four defined systems)*
- *If positive results, major resource-expansion drilling program in 2008*