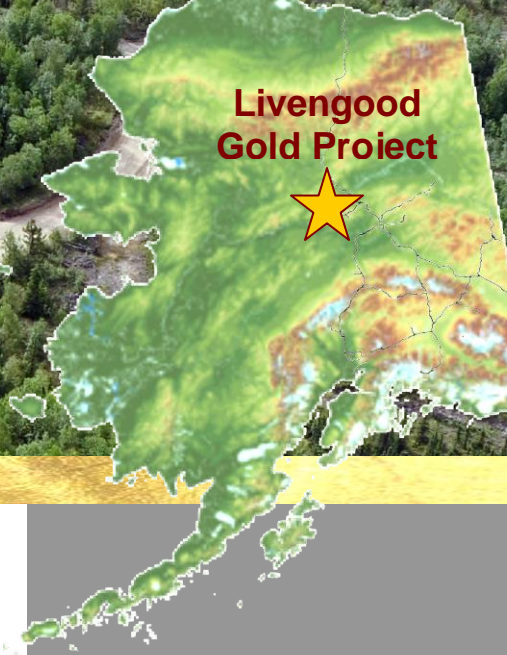
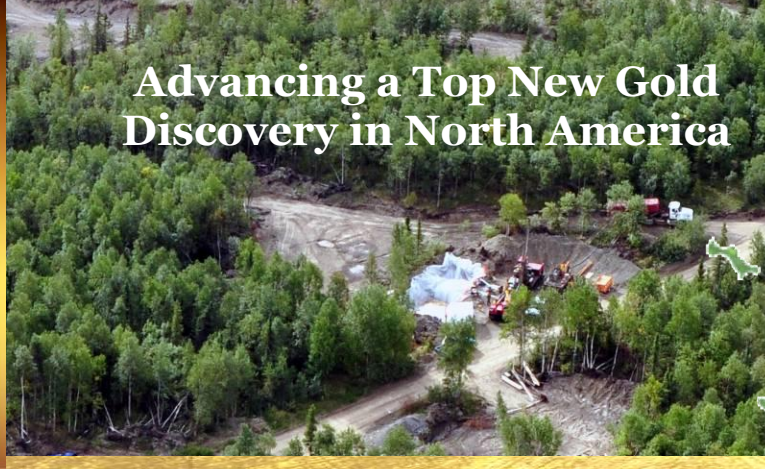


# Advancing a Top New Gold Discovery in North America



**International Tower Hill (ITH)** controls a 100% interest in the world class Livengood Gold Project located by paved highway 70 miles north of Fairbanks, Alaska.

The Company has initiated a Two-Phase Prefeasibility Study and is now advancing the Livengood project towards a full feasibility study and a potential production decision. With considerable district-wide new discovery potential, the project is ranked in the top 2% of gold discoveries made globally in the past 20 years and its substantial size offers investors significant leverage to rising gold prices.

ITH is focused on the rapid advancement of the Livengood deposit into a compelling development project in 2010 while it continues to expand the deposit and explore its 145 km<sup>2</sup> district for new deposits.



## June 2010 Livengood Resource Estimate (PA Base Case Cutoff of 0.30 g/t Au):

Resource Category	Gold Cutoff (g/t)	Tonnes (M)	Gold (g/t)	Gold (Moz)
<b>Indicated</b>	<b>0.3</b>	<b>789</b>	<b>0.62</b>	<b>15.7</b>
<b>Inferred</b>	<b>0.3</b>	<b>229</b>	<b>0.55</b>	<b>4.9</b>
Indicated	0.5	409	0.83	10.9
Inferred	0.5	94	0.79	2.4

The Company recently released project enhancement options on its Preliminary Assessment (PA) supporting an initial low CAPEX Accelerated Heap Oxide Operation to be followed by an Upscale Milling-Heap Option. This option creates compelling economics and a potential rapid development path for the Livengood project:

- Mining Rate of 514,000 oz/yr with Mine Life of 7.1 years
- Life of project 1:1.11 strip ratio
- At \$750/oz Au: Pre-tax NPV (5%) of \$34M – IRR 6.9%
- At \$950/oz Au: Pre-tax NPV (5%) of \$579M – IRR 26.9%
- At \$1,200/oz Au: Pre-tax NPV (5%) of \$1.3B – IRR 47.4%

ITH management is highly experienced with a proven track record of discovery and project development. This growing team of mine developers will guide the Livengood project forward through pre-feasibility and, should a production decision be made, permitting and development.

The Company cautions that the PA is preliminary in nature, and is based on technical and economic assumptions which will be evaluated in the Pre-feasibility Study. The PA is based on the Livengood in-situ resource model (June, 2010) which consists of material in both the indicated and inferred classification. Inferred mineral resources are considered too speculative geologically to have technical and economic considerations applied to them. The current basis of project information is not sufficient to convert the in-situ mineral resources to mineral reserves, and mineral resources that are not mineral reserves do not have demonstrated economic viability. Accordingly, there can be no certainty that the results estimated in this PA will be realized. The PA results are only intended as an initial, first-pass review of the potential project economics based on preliminary information. The Company cautions that it has not demonstrated that it will be economically viable to build and operate a mine at Livengood and that it is not in a position at this time to make, nor has it made, a production decision. Accordingly, there is a significant risk that the Company will not be able to economically build or operate a mine at Livengood, and that it will not, therefore, make a decision to commence the building of a mine at Livengood. Even if a production decision is made, there can be no assurance that the Company would be able to build a mine at Livengood within the projected timeframe, or at all.

## SHARE STRUCTURE

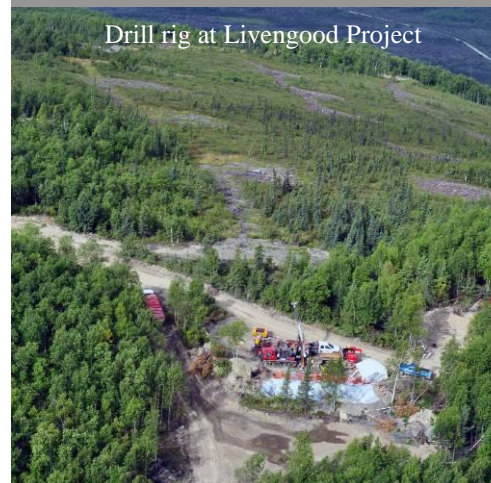
Trading Symbol	
TSX:	ITH
NYSE-A:	THM
FSE:	IW9
Shares I/O:	84,503,155
Fully Diluted:	90,753,155
Market Cap:	\$800 M
Treasury	\$120 M

## MAJOR SHAREHOLDERS

Tocqueville Asset Mgmt	13.7%
AngloGold Ashanti	11.3%
Paulson & Co.	6.0%
ITH Management	3.6%
Institutional Ownership	27.8%

## MANAGEMENT

Jeff Pontius, President & CEO  
 Carl Brechtel, COO  
 Karl Hanneman, Livengood Proj.Mgr  
 Russell Myers, VP Exploration



Drill rig at Livengood Project

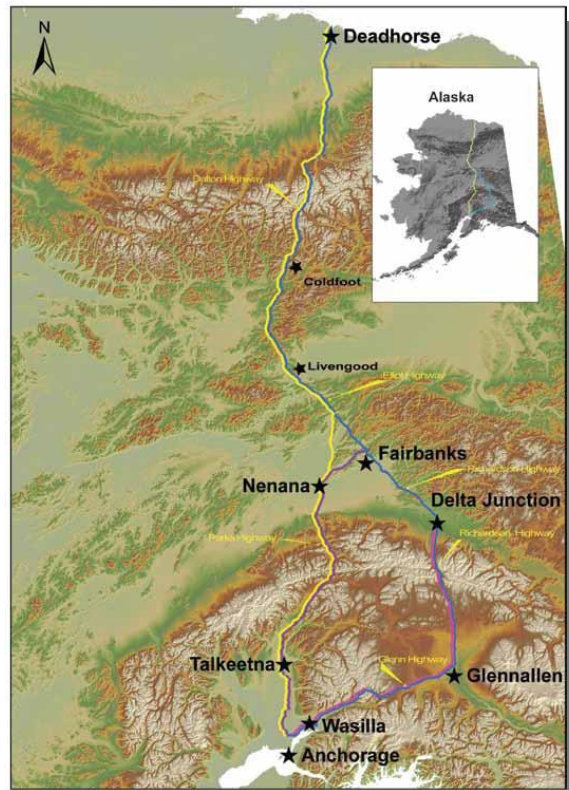


### Project Infrastructure

- Accessible via all weather paved highway 70 road miles north of Fairbanks, Alaska, a major mining center.
- State of Alaska examining a number of power cost-reduction initiatives, including a natural gas line that would run by the project site.
- Favorable production facility sites and adequate water supply.

### Permitting

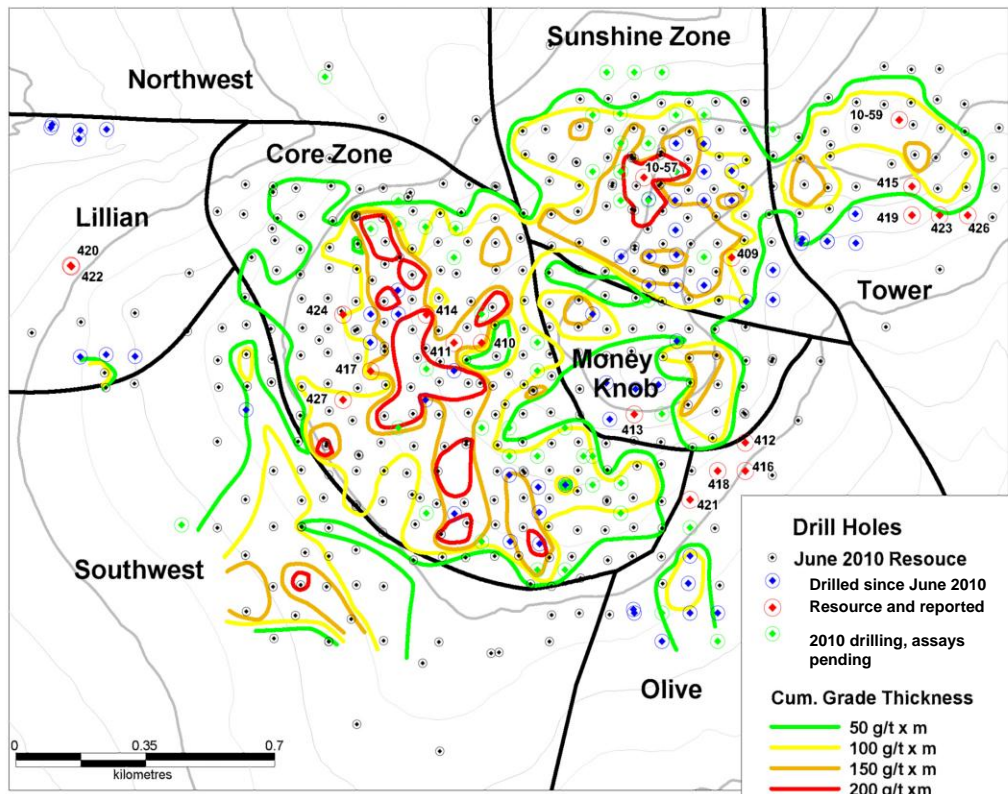
- No significant permitting issues identified to date (water, fish, wildlife, cultural or community) and no Native claims issues.
- MOU signed with State of Alaska Large Mine Permitting group to facilitate permitting.
- Baseline environmental work began in 2008 (site drainages are classified as "industrial waters").



Proposed In-State Gas Line Route

### Continuous Exploration Success

The Livengood deposit has been continually expanding since its discovery in late 2006 with aggressive resource expansion drilling programs that now total over 150,000 m.



### CONTACT

Shirley Zhou  
 VP, Corporate Communications  
 T: 604.638.3247  
 E: [szhou@ithmines.com](mailto:szhou@ithmines.com)

Investor Relations  
 Toll-Free: 1-888-770-7488  
 E-mail: [info@ithmines.com](mailto:info@ithmines.com)

International Tower Hill Mines Ltd.  
 Suite 1920 – 1188 W. Georgia St.  
 Vancouver, BC Canada V6E 4A2  
 T: 604.683.6332 | F: 604.408.7499

[www.ithmines.com](http://www.ithmines.com)

This fact sheet contains forward-looking statements within the meaning of applicable Canadian and US securities legislation. Although the Company believes that such statements are reasonable, it can give no assurance that such expectations will prove to be correct. Information concerning mineral resource estimates and the preliminary economic analysis thereof also may be deemed to be forward-looking statements in that it reflects a prediction of the mineralization that would be encountered, and the results of mining it, if a mineral deposit were developed and mined. The Company cautions investors that any forward-looking statements by the Company are not guarantees of future results or performance, and that actual results may differ materially from those in forward looking statements as a result of various risks and uncertainties as disclosed in the Company's AIF filed with certain securities commissions in Canada and the Company's annual report on Form 40-F filed with the United States Securities and Exchange Commission. All of the Company's Canadian public disclosure filings may be accessed via [www.sedar.com](http://www.sedar.com) and its United States public disclosure filings may be accessed via [www.sec.gov](http://www.sec.gov), and readers are urged to review these materials, including the technical reports filed with respect to the Livengood property. Readers are also urged to consult with an investment professional before making any decision to invest in the Company's securities.